

Bariatric Brace:

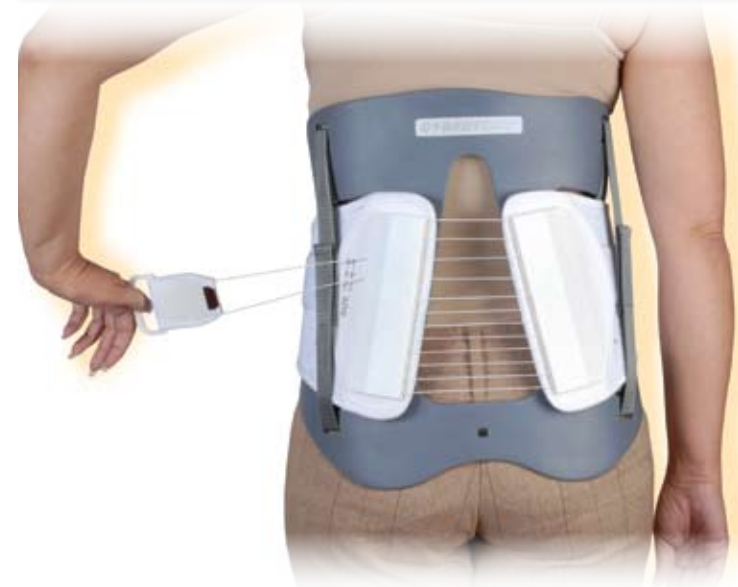


Cybertech Original Brace
Size: Sm

Cybertech Bariatric Brace

Cybertech Bariatric Braces are available to fit patients from 56 to 68 inches. (Brace shown here with Cybertech Original Brace in small size for comparison.)

LSO



LSO



Anterior panel provides additional ergo-dynamic abdominal comfort and support.

TLSO



TLSO



TLSO



SO



PRODUCT OVERVIEW



BI-MOD Chairback System Code L0633 Approved

- Combines rigid anterior-posterior and lateral control with superior abdominal compression.
- Chairback easily slips off so LSO can be used for rehab/maintenance.
- Chairback frame can easily be custom-shaped with heat gun.
- Sizes of LSO and Chairback Frames are interchangeable, allowing greater ease of fitting.
- New! BariatricBrace version available--fitting patients with extreme girths 56"-68" (10", 90" black only).

TRI-MOD System Plus Code L0637 Approved

- Rigid Unibody Frame provides superior Posterior and Medial Lateral support.
- New anterior panel, Chairback frame, and Cybertech Brace: creating the TRIMODULAR SYSTEM: Incredible support, Patient comfort, Intercavitary pressure.
- Lightweight, impeccable construction, breathable side panels, insure greater compliance.
- Interchangeable TriMod component sizes insure proper patient fit.
- Black or White (subject to availability)
- BariatricBrace version available--fitting patients with extreme girths 56"-68" (10", 90" black only).

CRUCIFORM Code L0472 Approved

- Finally, a patented closing system almost anyone can operate.
- 6X mechanical advantage for restricting flexion vs. traditional Cruciform orthoses.
- Unique mechanical advantage provides superior 3-point Fixation.
- Patented nylon chest plate provides unique "springlike" dynamic.
- Custom fits each individual body.
- Provides greater control and comfort.
- Vertical and lateral aspects of metal extension easily adjusted by patented pull knob.
- Supportive pads.

TLSO with T-Bar Code L0491 Approved

- Utilizing the Mechanical Advantage pulley system on each side, the Cybertech TLSO provides maximum circumferential support.
- Full range of posterior and anterior adjustment permits true custom fitting.
- Thoracic extension features a sternal notch piece that adjusts with a simple pull of a knob. The entire extension can be removed in the event of a prescription change.
- Patient can fully adjust the orthosis in 5 seconds!
- Dual fabric fasteners make it easy to put on and take off the TLSO.
- Lordotic pads are available.
- Revised TLSO design provides easier application.

BODY JACKET Code L0639 Approved

- Utilizing two patented Mechanical Advantage pulley systems maximizes rigid support.
- Dual pulley system controls permit independent adjustment of upper and lower segments of the Body Jacket.
- Adjustments are easy and quick...the Body Jacket can be fully adjusted within 5 seconds!
- Pulley system units can be removed for washing.
- A series of four separate Lordotic pads are available for optimal lordotic conformity.

SI BELT Code L0621 Approved

- 5:1 mechanical advantage compression power provides unmatched pelvic-sacral support.
- Flexible sacroiliac orthosis with breathable mesh, comfortable to wear.
- Significantly reduces motion about the sacroiliac joint. Instant pain relief in most cases.
- Fabric closure for one size fits all performance, 23 to 50 inch circumference.
- Flexible Pulley System instantly adjusts to the body with one hand in one second.
- Customized stabilization pressure specific to the patient.
- Adjustable pads. Remove both pads for the sleekest fit.



1815 Wright Ave., La Verne, CA 91750
Ph: 1.800.220.4224 Fax: 1.909.447.7058
www.cybertechmedical.com



Cybertech Medical

Dynamic Pulley System

6:1 ratio, low-friction Mechanical Advantage Pulley System provides powerful, smooth and easily-controlled compression.



Thirteen pulleys create a 6:1 ratio for ease and adjustment.

Shown here in the pre-adjustment position.



One simple pull allows for easy adjustment.

LO



LO



LO



LO



LO



LSO



LSO



Breathable interior padding reduces heat and adds comfort



SPINE Brace available alone or with SPINE Program that includes instructional DVD, manual and carry bag.



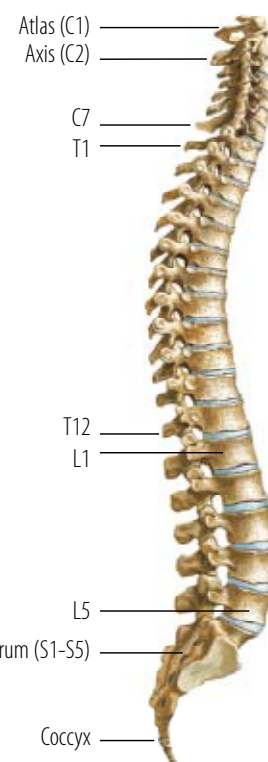
Anterior panel provides additional ergo-dynamic abdominal comfort and support.



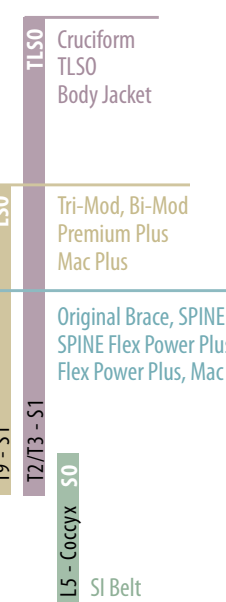
Flex Power panel provides additional ergo-dynamic abdominal lightweight comfort and support!



Anterior panel provides additional ergo-dynamic abdominal comfort and support.



RANGE OF SPINAL SUPPORT



The "ORIGINAL" CYBERTECH BRACE

- Instant and bionic assisted support and comfort.
- Patented Mechanical Advantage Pulley System delivers 6 times more support power and optimum abdominal compression.
- Breathable interior padding reduces heat and adds comfort.
- Included in the Bi-Mod, Tri-Mod and Premium Plus systems.



S.P.I.N.E. PROGRAM

- Utilizing the patented Mechanical Advantage Pulley System, the SPINE provides a powerful, dynamic approach to abdominal compression.
- The patient can adjust the brace with one hand in one second for standing, sitting, walking or driving.
- Specially designed breathable mesh maximizes air-flow.



SPINE BRACE FLEX POWER PLUS

Code L0627 Approved

- Patented, new Flex Power panels and SPINE brace that comfortably contour and conform to each patient's body structure.
- 6:1 ratio, low-friction Mechanical Advantage Pulley System provides powerful, smooth and easily-controlled compression.
- Quick, one-hand adjustment controls support level and comfort for standing or sitting.
- Single front closure provides easy opening and closing.

FLEX POWER PLUS

Code L0627 Approved

- Patented, new Flex Power panels and Flexible Pulley System in an intermediate brace that comfortably contour and conform to each patient's body structure.
- 5:1 ratio, low-friction Flexible Pulley System provides powerful, smooth and easily-controlled compression.
- Quick, one-hand adjustment controls support level and comfort for standing or sitting.
- Single front closure provides easy opening and closing.



MAC (Mechanical Advantage Corset)

Code L0626 Approved

- New flexible pulley system that curves to the patient's natural lordosis.
- The most powerful corset on the market.
- As thin as a belt—so you can wear it under clothing.
- Up to 6" of closure—unmatched abdominal compression.

MAC PLUS

Code L0630 Approved

- Flex Power panel and brace come pre-assembled, shortens fitting time for patient and orthotist.
- Panel offers support beyond code requirement.
- Custom designed lightweight mesh over soft wicking liner material allow unmatched breathability and comfort.
- Patented Flexible Pulley system provides compression power for effective support over entire brace and panel.
- Thin profile, easily concealed.

PREMIUM PLUS

Code L0631 Approved

- Patented, new Flex Power panels comfortably contour and conform to each patient's body structure.
- 6:1 ratio, low-friction Mechanical Advantage Pulley System provides powerful, smooth and easily-controlled compression.
- Quick, one-hand adjustment controls support level and comfort for standing or sitting.
- Single front closure provides easy opening and closing.