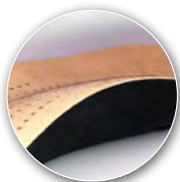


of an individual and personal attachment. **revere** to prize or *value*. **revere** **ADMIRE**, profoundly. Appreciate, *cherish*, Enjoy. be in **AWE** of. **revere** to *adore*, & treasure, feel deep *reverence*, hold in high esteem. **revere** to **ADORE** implies *love* and stresses the notion of an individual and



unique fit and support, that brings style and comfort to life.

Finding beautiful sandals and shoes that feel and fit amazing, is not always easy – **UNTIL NOW.**



arch support

The revere foot bed is designed with a contoured arch support and deep heel cup to position the foot and re-create a natural foot print. This promotes stability and comfort to minimize tired and aching feet, giving you extra spring in your step.



removable footbeds

For customers wishing to insert their own orthotics or over the counter inserts, the revere foot-bed can be removed from all our shoes and many of our sandals, to accommodate 3rd party inserts



strap extenders

As no 2 feet are the same, our Comfort Fitting Features provide unrivalled adjustability with our innovative Strap Extenders. The strap extenders can be used to add an additional ½ an inch of length to our straps, without compromising style.



trim marks

Narrow feet? We have you covered here also. Many of our sandals include trim marks designed into our uppers, so you can reduce the length of any strap to ensure a perfect fit every time.



full length fillers

If you find during fitting that our shoes are feeling a little roomy, either in width or length, our custom fillers can be trimmed and placed under our contoured foot-beds to provide a snugger fit.

availability of wide widths

Many of our sandals and shoes are available in both medium and wide widths





Merlot Hues

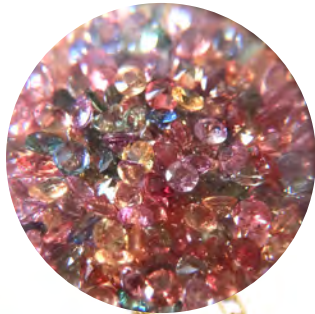
Bold
ONYX



Bringing warmth and richness to the cool fall months, revere's AW19 collection features an array of leathers, animal prints and skins in alluring new hues.

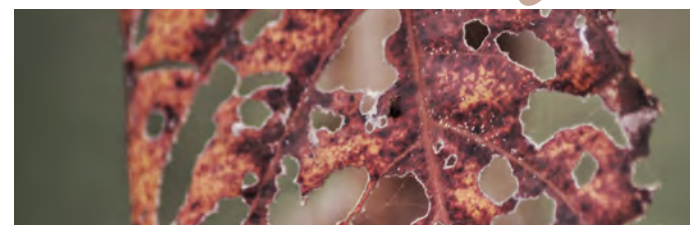
Additions to the season's palette include a Rusty Metallic nubuck with a hint of antique sheen, as well as a Merlot leather that offers depth with a hint of sparkle, while supple soft Clay is the perfect neutral for transitional months.

Adding to fall favorites like Cognac, Black Metallic Python, Sapphire and Gold Wash, revere's fresh new leathers have been chosen for their soft feel and eye-catching finishes.



Rust & Clay

SAPPHIRE & Navy Lizard



BONN

A mary jane with a twist, Bonn's asymmetrical vamp strap lends a hint of modernity to a classic style. A demi-wedge elevates the look and adds a small but sexy bit of height. Bonn is anything but basic.

MSRP: \$139.95
 WHOLESALE: \$62.50
 WIDTH: Medium & Wide
 SIZES: Full Sizes 5 to 12 US
 ADJUSTABILITY: Single strap



NEW Merlot



Cognac



Black Metallic Python



Onyx



NEW Gold Wash



STRAP
EXTENDERS



REMOVABLE
COMFORT FOOTBED



FOAM FILLERS

OSAKA

Our sweet and stylish Osaka mary-jane oozes style and confidence, whilst delivering a soft & flexible fit. A tapered wedge adds just enough height to this casual classic, which bridges the gap between work and weekend-wear. Like its namesake city, Osaka brings together modern styling while paying homage to a traditional silhouette.

MSRP: \$139.95
 WHOLESALE: \$62.50
 WIDTH: Medium & Wide
 SIZES: Full Sizes 5 to 12 US
 ADJUSTABILITY: Single strap



NEW Rusty Metallic



NEW Clay



Sapphire/Navy Lizard



Black/Black Lizard



STRAP
EXTENDERS



REMOVABLE
COMFORT FOOTBED



FOAM FILLERS



ICS Shoes
 Voice: (877) 553-5544
 Email: info@icsShoes.com
 Website: www.icsShoes.com

NEW SEOUL

A workwear staple she won't want to take off, the Seoul demi-wedge takes the delicate, feminine silhouette of a ballet flat and adds a modest hint of height. Criss-crossing elastic straps across the vamp add flexibility, hugging the foot with every step.

MSRP: \$129.95
 WHOLESALE: \$57.50
 WIDTH: Medium & Wide
 SIZES: Full Sizes 5 to 12 US
 ADJUSTABILITY: Elastic



Black Metallic Python



REMOVABLE
COMFORT FOOTBED



FOAM FILLERS



Sapphire



Rusty Metallic



Onyx

NEW TANGIER

Modern, streamlined and incredibly versatile, Tangier's wearability is sure to prove limitless. A beautifully-tapered demi-wedge, supple leather uppers and a trend-forward zip detail adorn this minimalist silhouette, which pairs perfectly with slacks or denim.

MSRP: \$149.95
 WHOLESALE: \$67.50
 WIDTH: Medium & Wide
 SIZES: Full Sizes 5 to 12 US
 ADJUSTABILITY: Zipper



Clay



REMOVABLE
COMFORT FOOTBED



FOAM FILLERS



Rusty Metallic



Black French/Black Lizard



Black Pearl



ICS Shoes
 Voice: (877) 553-5544
 Email: info@icsShoes.com
 Website: www.icsShoes.com

GENOA

Despite its perfectly polished appearance, Genoa's oh-so-comfortable stretch textile upper makes this loafer a joy to wear. From the office to after-work drinks, Genoa's decorative, adjustable animal print strap lend serious sophistication to this covertly cozy classic. These fashionable shoes for orthotics also feature a removable footbed.

MSRP: \$139.95
 WHOLESALE: \$62.50
 WIDTH: Medium & Wide
 SIZES: Full Sizes 5 to 12 US
 ADJUSTABILITY: Full neoprene upper with single strap



Navy



NEW Graphite



Black



STRAP
EXTENDERS



REMOVABLE
COMFORT FOOTBED



FOAM FILLERS

JORDAN

Proper, professional and just a little bit playful, Jordan brings unrivalled comfort to a low-profile loafer silhouette. With twin gusset stretch panels for flexibility and a tapered wedge for added height, Jordan is a versatile option for the woman on the go.

MSRP: \$149.95
 WHOLESALE: \$67.50
 WIDTH: Medium & Wide
 SIZES: Full Sizes 5 to 12 US
 ADJUSTABILITY: Twin elastic gussets



Onyx



Gold Wash



NEW Leopard



NEW Black Pearl



Cognac



REMOVABLE
COMFORT FOOTBED



FOAM FILLERS



ICS Shoes
 Voice: (877) 553-5544
 Email: info@icsShoes.com
 Website: www.icsShoes.com

NEW BUDAPEST

This sweet shootie is polished enough for a day at the office, yet ready for anything the weekend has to offer. With a wood stacked heel and twin gore panels across the vamp, Budapest is comfort disguised as pure style.

MSRP:	\$169.95
WHOLESALE:	\$77.50
WIDTH:	Medium Only
SIZES:	Full Sizes 5 to 12 US
ADJUSTABILITY:	Twin gussets



Rusty Metallic



Black Metallic Python



Onyx

REMOVABLE
COMFORT FOOTBED

FOAM FILLERS

PALERMO

The height of carefree sophistication, the Palermo shootie pairs perfectly with your favorite skinny jeans and knit sweater for a look that's quintessentially fall. Twin gusset panels add both flexibility and eye-catching detail to the supple leather upper.

MSRP:	\$169.95
WHOLESALE:	\$77.50
WIDTH:	Medium Only
SIZES:	Full Sizes 5 to 12 US
ADJUSTABILITY:	Twin gussets



Navy Lizard/Sapphire



Black Lizard

REMOVABLE
COMFORT FOOTBED

FOAM FILLERS



ICS Shoes
Voice: (877) 553-5544
Email: info@icsShoes.com
Website: www.icsShoes.com

DAMASCUS

A little bit daring but endlessly wearable, Damascus features an asymmetrical side zip detail and a demi-wedge rubber outsole. Luscious leather, animal skin prints and metallic add a hint of shine and texture to this mid-ankle bootie. Removable comfort footbed, with built-in arch support, allows the insertion of custom orthotics.

MSRP: \$169.95
 WHOLESALE: \$77.50
 WIDTH: Medium & Wide
 SIZES: Full Sizes 5 to 12 US
 ADJUSTABILITY: Elastic gusset with lateral zip entry



NEW Rusty Metallic



REMOVABLE
COMFORT FOOTBED



FOAM FILLERS



Cognac



Onyx/Black Lizard



NEW Black Metallic Python/Onyx

NEW DUBROVNIK

Lace up for a crisp fall day with Dubrovnik, a demi-wedge bootie that's made for endless exploring. An ankle-high silhouette offers ample support and full coverage for chilly weather. Pair Dubrovnik with leggings or a skirt for a look that's both cool and cozy.

MSRP: \$169.95
 WHOLESALE: \$77.50
 WIDTH: Medium & Wide
 SIZES: Full Sizes 5 to 12 US
 ADJUSTABILITY: Lace up



Sapphire



REMOVABLE
COMFORT FOOTBED



FOAM FILLERS



Clay



Merlot



Onyx



ICS Shoes
 Voice: (877) 553-5544
 Email: info@icsShoes.com
 Website: www.icsShoes.com

NEW ASPEN

Comfort has never looked cooler than Aspen, a mixed-material ankle bootie with ultra-modern sensibility. Super-soft leather uppers contrast with stretch textile paneling across the midfoot, offering flexibility and comfort. A discreet heel zip makes for easy on-and-off.

MSRP:	\$159.95
WHOLESALE:	\$72.50
WIDTH:	Medium & Wide
SIZES:	Full Sizes 5 to 12 US
ADJUSTABILITY:	Neoprene stretch forefoot with back zipper entry



Sapphire/Stretch



Onyx/Stretch

REMOVABLE
COMFORT FOOTBED

FOAM FILLERS



HAVANA

The Havana ankle bootie delivers as much character as its namesake, with a bold and eye-catching upper that is sure to draw compliments. Triangular twin gore panels add stretch and comfort while drawing attention to the booties design elements, including a varied topline and lustrous leathers, animal skin prints and metallics.

MSRP: \$189.95
 WHOLESALE: \$87.50
 WIDTH: Medium Only
 SIZES: Full Sizes 5 to 12 US
 ADJUSTABILITY: Twin gusset



Navy Lizard/Sapphire

Onyx



NEW Merlot



REMOVABLE
COMFORT FOOTBED



FOAM FILLERS



NEW KYOTO

The ultimate find for the ankle boot addict, Kyoto features daring details like a studded trim and twin side zippers. In four rich color ways, all with a beautifully supple hand feel, Kyoto is an absolutely essential addition to her fall wardrobe.

MSRP: \$179.95
 WHOLESALE: \$82.50
 WIDTH: Medium Only
 SIZES: Full Sizes 5 to 12 US
 ADJUSTABILITY: Twin zips



Clay

REMOVABLE
COMFORT FOOTBED

FOAM FILLERS



Rusty Metallic



Merlot



Onyx

SIENA

With a decidedly European flair, the Siena ankle boot brings functional design to the season's most coveted silhouette. With a low, wood-stacked heel and twin ankle zippers, this boot is sure to become a fast fall favorite. A palette of must-have, textured leathers will make it hard to choose just one pair.

MSRP: \$189.95
 WHOLESALE: \$87.50
 WIDTH: Medium only
 SIZES: Full Sizes 5 to 12 US
 ADJUSTABILITY: Twin Zips

**NEW** LeopardREMOVABLE
COMFORT FOOTBED

FOAM FILLERS

**NEW** Rusty Metallic

Gold Wash



Black Lizard



ICS Shoes
 Voice: (877) 553-5544
 Email: info@icsShoes.com
 Website: www.icsShoes.com

NEW NAIROBI

An update to the bestselling Paris flat, Nairobi features an envelope fold detail across the vamp and a textile topline for ultimate comfort. An elegant alternative to heels, Nairobi pairs perfectly with holiday party attire or a simple sweater and slacks.

MSRP: \$129.95
 WHOLESALE: \$57.50
 WIDTH: Medium Only
 SIZES: Full Sizes 5 to 12 US



Black Lizard



REMOVABLE
COMFORT FOOTBED



FOAM FILLERS



Rusty Metallic



Navy Lizard



Black Pearl

RHODES

Find your perfect fit with Rhodes, an elegant ballet flat with beautiful soft leather uppers that provide comfort, flexibility and a hint of sass. In soft-toned neutrals, this fall flat checks all the boxes. Removable comfort foot-bed with built-in arch support allows the insertion of custom orthotics.

MSRP: \$139.95
 WHOLESALE: \$62.50
 WIDTH: Medium & Wide
 SIZES: Full Sizes 5 to 12 US



Cognac



REMOVABLE
COMFORT FOOTBED



FOAM FILLERS



Onyx/Black Lizard



ICS Shoes
 Voice: (877) 553-5544
 Email: info@icsShoes.com
 Website: www.icsShoes.com

INSPIRED by fashion.
Designed for *COMFORT.*



unrivaled fit, ultimate adjustability

As no two feet are the same, revere's innovation strap extenders offer you the ability to personalize the fit of our sandals by extending the length of our straps to suit your customers feet, whilst not taking away from the stylish look of our designs.

Whether you are fitting narrow, medium, wide or extra wide feet, the combination of adjustable uppers and our strap extenders, will deliver a personalized fit to enhance the comfort your customer desire.

revere strap extensions are provided with every pair of sandals across all styles and colors.



CATALINA

Bring on the sparkle with Catalina, a three-strap slide sandal that's sure to turn heads. A hot stone trim across the vamp adds incredible visual interest to this otherwise simple design. Available in three must-have color ways that all offer a hint of sheen.

MSRP: \$149.95
 WHOLESALE: \$67.50
 WIDTH: Medium only
 SIZES: Full Sizes 5 to 12 US
 ADJUSTABILITY: 3 Strap T-Bar with hot stone trim



Onyx



Gold Wash



STRAP
EXTENDERS



REMOVABLE
COMFORT FOOTBED

RIO

Beautiful soft uppers steal the spotlight on Rio, a double-strapped women's slide sandal with delightful detailing. In vibrant deep blue or lustrous black, Rio combines subtle adjustability with metallic accents and textured lizard leather highlights.

MSRP: \$139.95
 WHOLESALE: \$62.50
 WIDTH: Medium & Wide
 SIZES: Full Sizes 5 to 12 US
 ADJUSTABILITY: 2 Straps



Onyx/Black Lizard



Sapphire/Navy Lizard



STRAP
EXTENDERS



REMOVABLE
COMFORT FOOTBED



ICS Shoes
 Voice: (877) 553-5544
 Email: info@icsShoes.com
 Website: www.icsShoes.com

COMO

Combining color and texture for a contrast that's both cool and refined, Como is sure to have a place in any woman's wardrobe. Three subtle points of adjustability ensure a perfect fit without gapping or sliding.

MSRP:	\$149.95
WHOLESALE:	\$67.50
WIDTH:	Medium & Wide
SIZES:	Full Sizes 5 to 12 US
ADJUSTABILITY:	3 Straps including trim marks on back strap



Metallic Interest



STRAP
EXTENDERS



REMOVABLE
COMFORT FOOTBED



STRAP TRIM
MARKS



Gold Wash



Black/Black Croc

LUCCA

Wearable and walkable, Lucca's multi-strap silhouette makes it an absolute essential in any woman's wardrobe. With four points of adjustability for optimum fit, this flat sandal also boasts gorgeous floral accents across the vamp.

MSRP:	\$149.95
WHOLESALE:	\$67.50
WIDTH:	Medium only
SIZES:	Full Sizes 5 to 12 US
ADJUSTABILITY:	4 Strap T-Bar with floral accents



Black French



STRAP
EXTENDERS



REMOVABLE
COMFORT FOOTBED



Gunmetal



Champagne



ICS Shoes
Voice: (877) 553-5544
Email: info@icsShoes.com
Website: www.icsShoes.com

TOLEDO

A studded showstopper, Toledo's gladiator-inspired silhouette give way to customisable comfort. Four adjustable straps ensure a perfect fit with every wear, while metal accents across the vamp set this shoe apart from the crowd.

MSRP: \$149.95
 WHOLESALE: \$67.50
 WIDTH: Medium & Wide
 SIZES: Full Sizes 5 to 12 US
 ADJUSTABILITY: 4 Strap T-Bar with stud accents and trim marks on the back strap



Cognac



STRAP
EXTENDERS



REMOVABLE
COMFORT FOOTBED



Gunmetal



Biscuit



Navy/Blue Snake



Black French



ICS Shoes
 Voice: (877) 553-5544
 Email: info@icsshoes.com
 Website: www.icsshoes.com

MIAMI

Look no further for standout style-- the much-loved Miami sandal is quickly becoming a seasonal staple. With a unique zig-zag strap configuration and three points of adjustability, Miami hugs the foot and ensures a snug fit that's both comfortable and flattering.

MSRP:	\$149.95
WHOLESALE:	\$67.50
WIDTH:	Medium & Wide
SIZES:	Full Sizes 5 to 12 US
ADJUSTABILITY:	3 Straps including trim marks on back strap



STRAP
EXTENDERS



REMOVABLE
COMFORT FOOTBED

Blue French



Red Croc



Gunmetal



Biscuit



Champagne



Bronze Snake



Black Lizard



Black

ZANZIBAR

Strap in for summer with Zanzibar, the sophisticated sandal with so much to offer. Three subtle hook-and-loop closures provide ultimate adjustability, while crisscrossing straps across the forefoot add visual interest.

MSRP:	\$149.95
WHOLESALE:	\$67.50
WIDTH:	Medium & Wide
SIZES:	Full Sizes 5 to 12 US
ADJUSTABILITY:	3 Straps



STRAP
EXTENDERS



REMOVABLE
COMFORT FOOTBED

Ruby Metallic



Cognac



Metallic Interest



Black Lizard



STRAP TRIM
MARKS



ICS Shoes
Voice: (877) 553-5544
Email: info@icsShoes.com
Website: www.icsShoes.com

PORTOFINO

Pretty and practical, Portofino pairs perfectly with long walks down cobblestone streets and sunset adventures. With an adorable dual-strap silhouette and a closed back, this stable flat sandal is sleek and simple--the perfect packing item for your next trip abroad.

MSRP: \$159.95
 WHOLESALE: \$72.50
 WIDTH: Medium only
 SIZES: Full Sizes 5 to 12 US
 ADJUSTABILITY: 2 Straps, closed back



Gold Wash



Navy Lizard



Onyx



STRAP
EXTENDERS



REMOVABLE
COMFORT FOOTBED

GENEVA

Geneva is our go-to sandal for fast-paced days around town. Stylish vamp and ankle straps ensure a great fit, while a padded heel counter holds you in place for all-day wear.

MSRP: \$159.95
 WHOLESALE: \$72.50
 WIDTH: Medium & Wide
 SIZES: Full Sizes 5 to 12 US
 ADJUSTABILITY: 2 Straps, closed back



Champagne



Black Lizard



Black



Gunmetal



STRAP
EXTENDERS



REMOVABLE
COMFORT FOOTBED



One of our most stunning innovations for SS19 was our new wedge, a stylish silhouette featuring a cushioned contoured footbed that delivers hours of comfortable wear.

With a seamless outsole in black or neutral EVA, this wedge's 2.5-inches of height is our sleekest creation so far. With four styles on this unit, there's a look for every woman's wardrobe and lifestyle.



ICS Shoes
Voice: (877) 553-5544
Email: info@icsShoes.com
Website: www.icsShoes.com

SOPHIA

Elegant and easy, Sofia is a slide wedge with universal appeal. Zigzagging straps across the vamp provide flattering visual interest, while two points of adjustability make this spring favorite endlessly wearable, taking you from a day on the boardwalk through an evening stroll on the sand.

MSRP: \$129.95
 WHOLESALE: \$57.50
 WIDTH: Medium only
 SIZES: Full Sizes 5 to 12 US
 ADJUSTABILITY: 2 Straps



Black Metallic Python



Onyx



Leopard



STRAP
EXTENDERS

BARI FLORAL

With an eye-catching elastic upper and beautiful leather floral details, Bari is a strappy sensation that is both polished and feminine. Perfect for a night out or a wedding weekend, this ultra-comfortable wedge stands up to any stiletto in both look and feel.

MSRP: \$139.95
 WHOLESALE: \$62.50
 WIDTH: Medium only
 SIZES: Full Sizes 5 to 12 US
 ADJUSTABILITY: Elastic upper with floral accents inc trim marks on the back strap



Gold Wash



Black French



Gunmetal



STRAP
EXTENDERS



ICS Shoes
 Voice: (877) 553-5544
 Email: info@icsShoes.com
 Website: www.icsShoes.com

TAHITI

The Tahiti wedge marries sweet and sporty elements for a look that's perfect for a weekend on the town. With a stretchy gore panel across the vamp and metal grommet adornment, this stunning sandal is sure to be the envy of all.

MSRP:	\$139.95
WHOLESALE:	\$62.50
WIDTH:	Medium ONLY
SIZES:	Full Sizes 5 to 12 US
ADJUSTABILITY:	2 Straps plus elastic stretch Back strap includes trim marks



Black Metallic Python



STRAP
EXTENDERS



Leopard



Metallic Interest



Ruby Metallic



Black French

CASABLANCA

Casual, practical and perfectly polished, Casablanca's multi-strap design is versatile enough to go from day to night. In three essential color ways including stunning Metallic Interest, a high-shine textured leather, this wedge is the summer essential you'll keep coming back to.

MSRP:	\$139.95
WHOLESALE:	\$62.50
WIDTH:	Medium & Wide
SIZES:	Full Sizes 5 to 12 US
ADJUSTABILITY:	3 Straps



Black French



STRAP
EXTENDERS



STRAP TRIM
MARKS



Ruby Metallic



Metallic Interest



ICS Shoes
Voice: (877) 553-5544
Email: info@icsShoes.com
Website: www.icsShoes.com

MEN'S DURBAN

Durban's no-frills silhouette is anything but boring. These orthotic friendly slides are double-strappped with premium leather uppers. The subtle stitching lends to a look that's clean and confident.

MSRP: \$149.95
 WHOLESALE: \$67.50
 WIDTH: Medium only
 SIZES: Full Sizes 7 to 14 US
 ADJUSTABILITY: 2 Straps



Oiled Black



Whiskey



STRAP
EXTENDERS



REMOVABLE
COMFORT FOOTBED



STRAP TRIM
MARKS

MEN'S MONTANA II

For the guy who is always on the go, Montana has all the features he won't want to go without. These orthotic friendly shoes are perfect for an everyday casual look.

MSRP: \$159.95
 WHOLESALE: \$72.50
 WIDTH: Medium only
 SIZES: Full Sizes 7 to 14 US
 ADJUSTABILITY: 3 Straps



Whiskey



Oiled Black



STRAP
EXTENDERS



REMOVABLE
COMFORT FOOTBED